

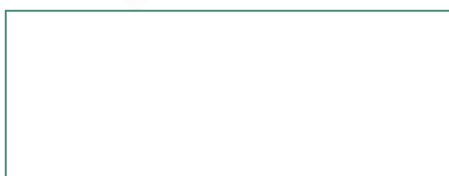
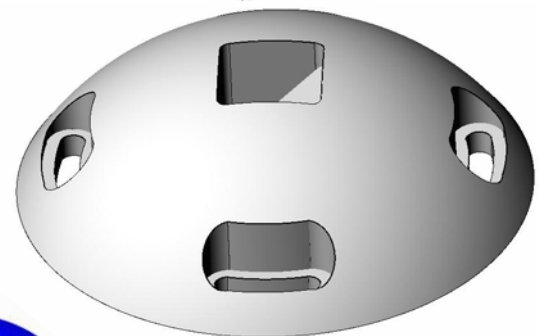
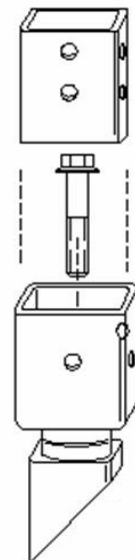
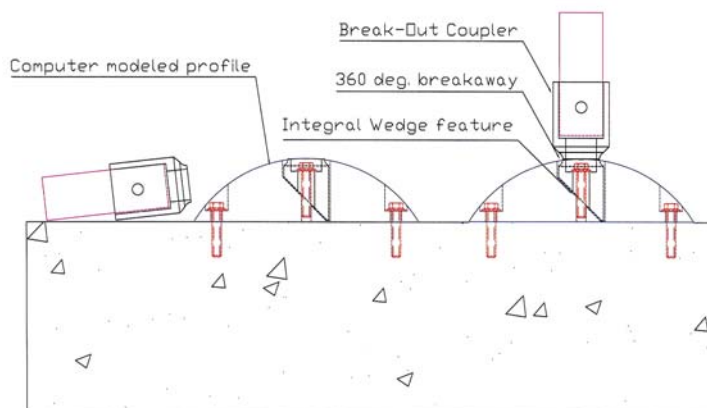
## Surface Mount Breakaway

The **Surface Mount (patent pending)** Base provides an advanced means of installing sign posts in situations where core drilling or driving methods are not suitable or when installers do not have access to expensive equipment.

The computer modeled spherical shape of the base and the recessed mounting bolt locations dramatically reduce pull-ups common with conventional surface or pedestal bases during direct wheel or undercarriage/plow blade impacts.

The **Surface Mount** accepts the patented Break-Out™ coupler with the Tri-Circular engineered 360° shear section. By incorporating the worlds most reliable breakaway system the **SM™** can be impacted from any angle or speed and be reused.

- Three (3) main parts (center bolt, coupler and base) ensure reliable real world usability
- Unique shape prevents pull-ups by undercarriage or plow/mower impacts
- Can be used with square, round or U-channel posts
- Internal Wedge-Lock™ feature applies enormous force to lock the coupler inside the anchor
- Uses standard concrete or drop-in anchors and can be installed with a hand held drill, no need for expensive core drills or post drivers for installation



**Distributed by:**

Pacific Products and Services  
7323 Lynwood Way  
Highland CA 92346  
909.633.1180